

River Habitat



655 Commercial Road
Limehouse
London E14 7LW

Contact:

T: 020 7791 9830

F: 020 7791 9831

Email: admin@riverhabitat.co.uk

Maurer Court, John Harrison Way, SE10

Three Bedroom Duplex Apartment

£1,200,000

rh-maurercrt486-ses6

A truly unique opportunity has arisen to acquire this fabulous penthouse situated in Greenwich Millennium Village. The lower level of this palatial residence has three bedrooms, all with outside space and masses of cupboard space. The master bedroom features fitted wardrobes, en-suite shower and a large walk-in wardrobe.



- * **Fitted wardrobes, en-suite shower and a large walk-in wardrobe.**
- * **Large open-plan kitchen**
- * **Two terraces and two balconies**

A truly unique opportunity has arisen to acquire this fabulous penthouse situated in Greenwich Millennium Village. The property epitomises luxury living and boasts a wealth of features. Proportions are very generous indeed, a fact which is verified by the size of the reception, 33 x 34ft. A double-height arched ceiling enhances the natural light and further adds the feeling of space.

There is a large open-plan kitchen, which features solid granite work surfaces and integrated appliances of the highest quality. Naturally, an apartment of this calibre would be incomplete without any outside space, and this penthouse features two terraces and two balconies. The uppermost terrace, accessed from the lounge, measures approximately 22ft and affords fabulous views of Canary Wharf and the Dome.

The second terrace is a staggering 40ft and features far reaching views of the Thames. The lower level of this palatial residence has three bedrooms, all with outside space and masses of cupboard space. The master bedroom features fitted wardrobes, en-suite shower and a large walk-in wardrobe. Greenwich Millennium Village is conveniently located for North Greenwich Jubilee Line station, which is just one stop to Canary Wharf and very convenient for the City. The surroundings are tranquil with a manmade lake and ecology park making relaxation an easy task.

- Reception: 33ft8 x 31ft4

Wooden flooring, gas radiator, double glazed windows, balcony views Thames. Hugh balcony, another terrace approximately 22ft

- Kitchen: Open plan

Ceramic floor, fitted kitchen, granite worktop, stainless steel sink, electric hob cooker, fridge freezer, washing machine, dryer machine, dishwasher.

- Bedroom 1: 15ft5 x 10ft9

Wooden flooring, gas radiator, double glazed windows, views river and fitted wardrobe. Large walk in Wardrobe

- En-suite:

Ceramic floor, electric radiator, ½ Tiled wall, fitted wardrobe, toilet, cubicle shower, wall mirror, wash basin, extractor fan, shaver point

- Bedroom 2: 12ft x 10ft7

Wooden flooring, gas radiator, double glazed windows, views river and fitted wardrobe. Long balcony

- Bedroom 3: 12ft9 x 7ft11

Wooden flooring, gas radiator, double glazed windows, views river and fitted wardrobe. Access to large private terrace

- Bathroom: 6ft11x 6ft11

Ceramic floor, electric radiator, ½ Tiled wall, bath, toilet, wall mirror, wash basin, extractor fan, shaver point, extractor fan.

- Hallway: 21ft2 x 8ft 11

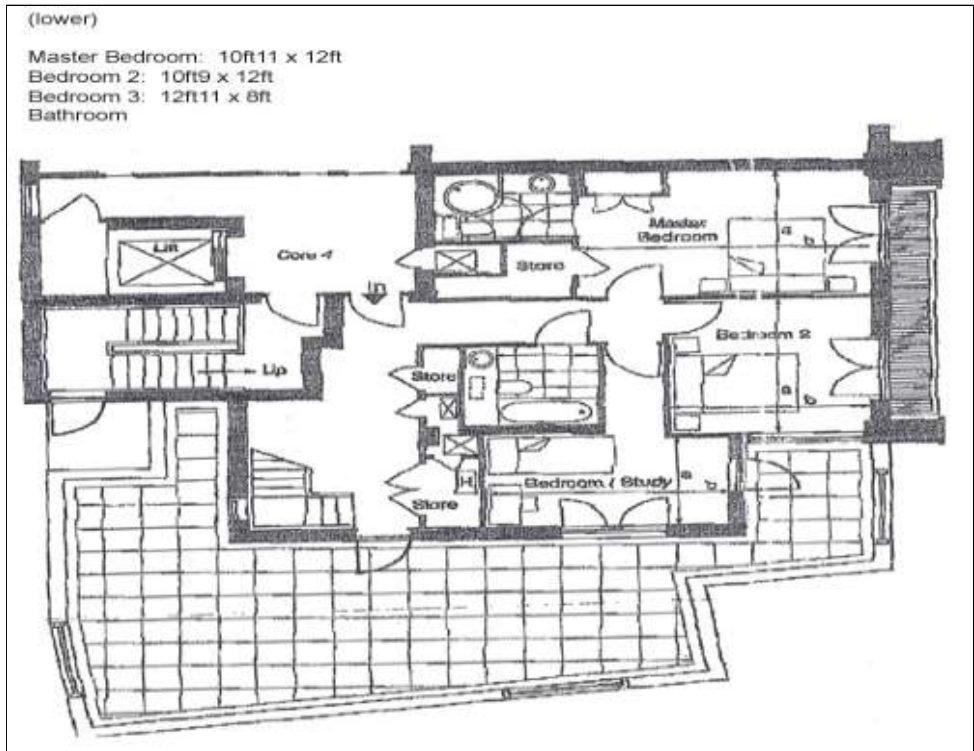
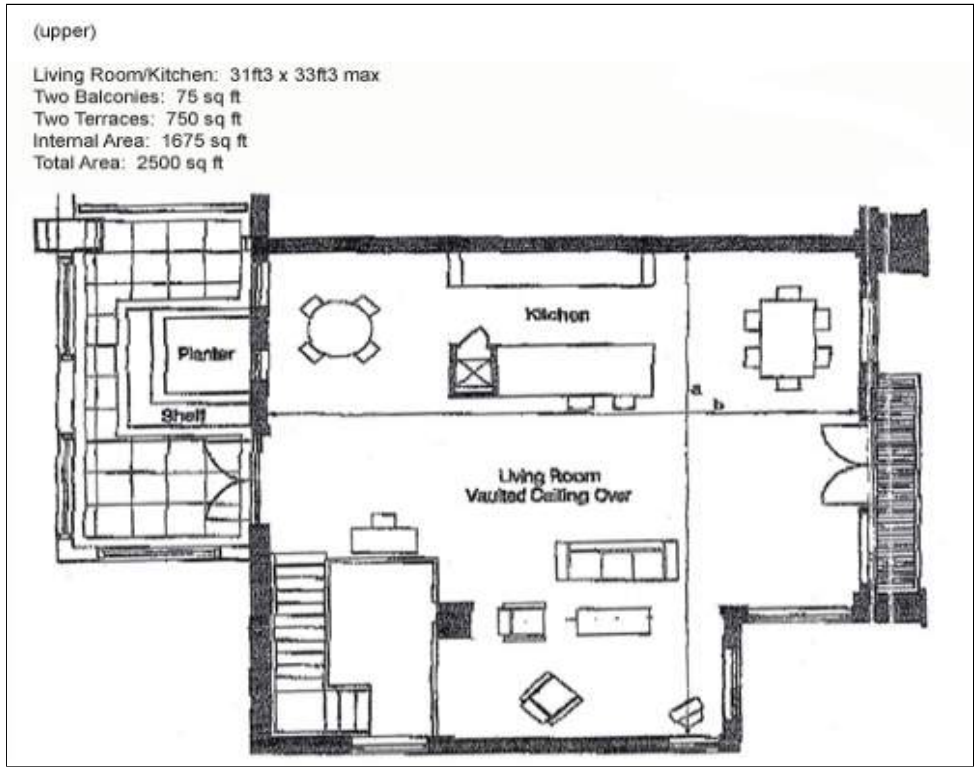
Two storage, start hall to lounge, Access to terraces



Important

River Habitat, their clients and any joint agents give notice that:

1. They have no authority to make or give any representations or warranties in relation to the property. These particulars do not form any part of an offer or contract and must not be relied upon as statements or representations of fact.
2. Any areas, measurements or distances are approximate. The text, photographs and plans are for guidance only and are not necessarily a complete representation of the property. It should not be assumed that the property has all necessary planning, building regulations or other consents and River Habitat have not tested any services, equipment or other facilities. Purchasers must satisfy themselves by inspection or otherwise.



(upper)

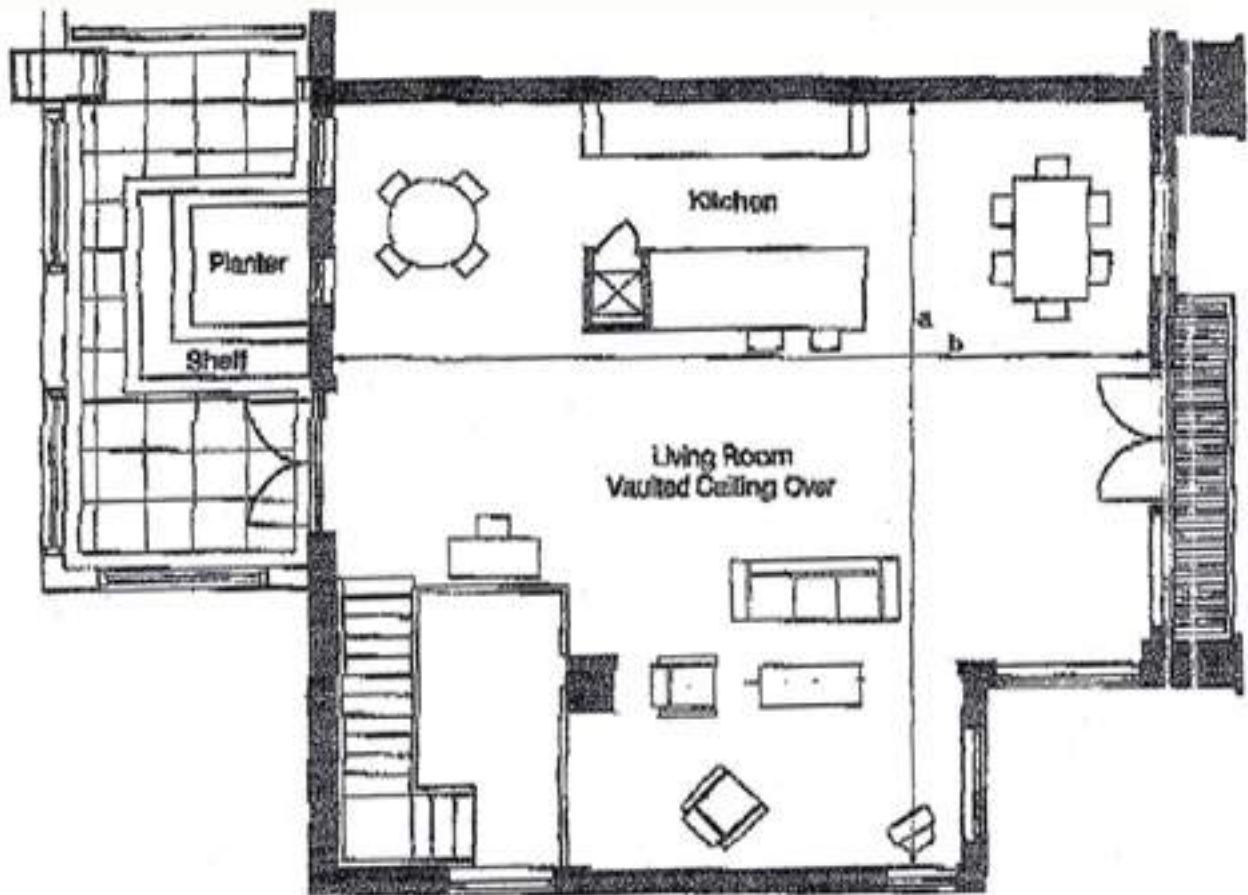
Living Room/Kitchen: 31ft3 x 33ft3 max

Two Balconies: 75 sq ft

Two Terraces: 750 sq ft

Internal Area: 1675 sq ft

Total Area: 2500 sq ft



(lower)

Master Bedroom: 10ft11 x 12ft

Bedroom 2: 10ft9 x 12ft

Bedroom 3: 12ft11 x 8ft

Bathroom

